



# RETAIL/RESTAURANT FOR LEASE

230 Commercial Street, Portland, ME 04101



## Property Description:

**Lease Rate: \$50.00 PSF NNN**

**Available Space: 2,655±SF**

Available for the first time in nearly 40 years, 230 Commercial Street is a rare opportunity for retailers/restauranteurs to occupy a space directly on the 100 yard line of one of Portland's shopping/dining hotspots, Commercial Street. This impressive location features excellent visibility and ample space for outdoor seating. Become embedded in Portland's Retail/Restaurant scene with longstanding area businesses such as Scales, Blanche & Mimi, DiMillo's, Simon Pearce, Chilton Furniture, Portland Dry Goods, Flatbread Company, David Wood, Sea Bags, Lukes Lobster, Ri Ra, Vermont Flannel, Portland Lobster Company and Many More.



- **Property Address:** 230 Commercial Street, Portland, ME 04101
- **Owner:** 5 Widgery Wharf LLC
- **Zoning:** WCZ / DEOZ
- **Year Built:** 1984
- **Signage:** On Building
- **No. of Stories:** One (1)
- **Sprinkler:** No
- **Availability Date:** Jan 1, 2024.
- **HVAC:** Forced Hot Air
- **NNN'S:** See Broker
- **Utilities:** Public Water/Sewer
- **Parking:** Area lots and garages.
- **Notes:** Tenant relocating and in full operation until year end. (Jan 1, 2024)

**Steve Baumann**  
**President . CEO**  
**241 US Route One**  
**4th Floor**  
**Falmouth, Maine 04105**  
**O . 207.253.1781**  
**C . 207.831.4063**  
**E . sbaumann@compass-cb.com**  
**W . www.compass-cb.com**



**COMPASS**  
COMMERCIAL BROKERS

# Interior Photos

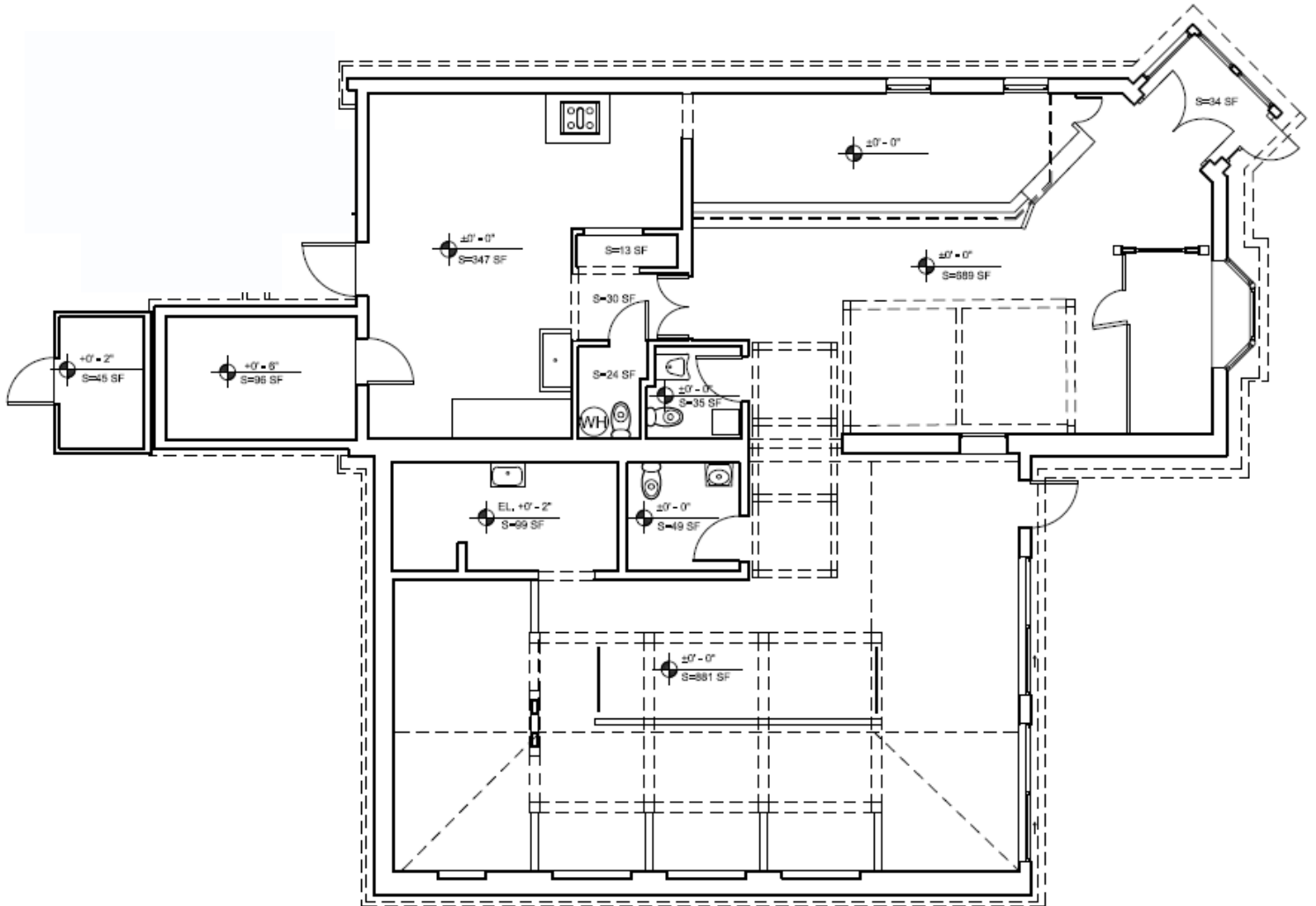
230 Commercial Street, Portland, ME 04101





# Floorplan

230 Commercial Street, Portland, ME 04101





# Area Map

230 Commercial Street, Portland, ME 04101

