



COMPASS
COMMERCIAL BROKERS

OFFICE FOR LEASE

161 Commercial/2 Market Street, Portland, ME



Available Space: 3,183 ± SF

Lease Rate: \$19.00/SF NNN

Property Description:

This full-floor office space features exposed brick and beam construction in the heart of the Old Port. With water views along Commercial Street and Market Street, this building stands out prominently along one of the busiest streets in Downtown Portland. This quintessential Old Port office space features 6 private offices, a conference room, reception area, and ample storage space, making it an excellent fit for a wide array of office uses. Don't miss your chance at this sought after location.

- **Property Address:** 161 Commercial St. Portland, ME 04101
- **Year Built:** 1850
- **Parcel ID:** 032 S004001
- **Owner:** 161 Commercial Street, LLC
- **Year Renovated:** 2011 (Office Space)
- **Utilities:** Public water and sewer
- **Zoning:** B3
- **No. of Stories:** 6
- **Elevator:** Yes
- **NNN:** \$5.72

Steve Baumann
President . CEO
241 US Route One
4th Floor
Falmouth, Maine 04105
O . 207.253.1781
C . 207.831.4063
E . sbaumann@compass-cb.com
W . www.compass-cb.com



Interior Photos

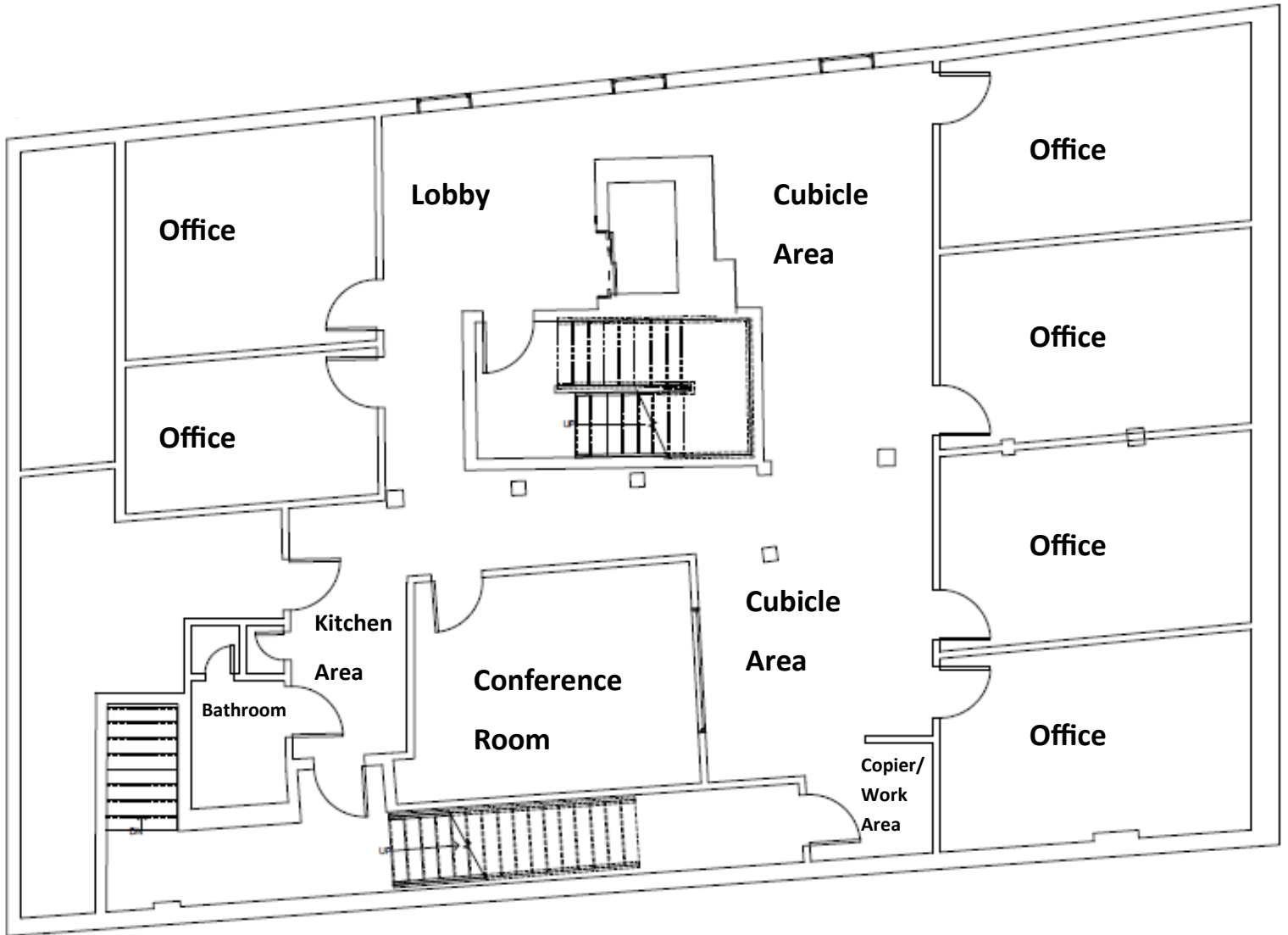
161 Commercial/2 Market Street, Portland, ME





Floorplan

161 Commercial/2 Market Street, Portland, ME





Area Map

161 Commercial/2 Market Street, Portland, ME

